



HIKMICRO Analyzer Client V2.0.1
Release Notes

TABLE OF CONTENTS

1	Introduction.....	4
1.1	Version information.....	4
1.2	Multilanguage type.....	4
1.3	Running environment	5
2	New features	6
2.1	Window layout adjustment available	6
2.1.1	3 types of quick layout.....	6
2.1.2	Arrange layout freely.....	6
2.1.3	Window layouts are automatically saved.....	8
2.2	Analysis toolbar and task list function rearranged	8
2.2.1	Top toolbar	8
2.2.2	Task list	9
2.2.3	Auto grouping all image files in task list	9
2.3	Palette settings reorganized.....	9
2.3.1	4 main palette types: palettes, isotherm, insulation and condensation	9
2.3.2	Isotherm provides 3 temperature ranges with distinguished color or palette filling	10
2.3.3	Range of temperature scale is user adjustable	11
2.3.4	New system palette: Blue Yellow.....	11
2.3.5	Supported palette file format is changed to *gpl.....	12
2.4	New overlay options and styles.....	12
2.4.1	Emissivity, ambient temperature, distance and reflected temperature can be overlaid	12
2.4.2	Top-left overlay style changeable	12
2.4.3	Adjustable style of overlay displayed with measurement tools.....	13
2.5	Settings path changed for overlay on exported images/videos.....	14
2.6	New features of exporting image temperature matrix.....	14
2.7	Library mangement	14
2.7.1	File sorting and filtering are supported in local file and quick access folders.....	14
2.7.2	Files can be displayed in list in local and favorite folders	15
2.8	Report.....	15
2.8.1	New report home page offers creation guide	15
2.8.2	ODT format templates supported.....	16
2.8.3	HIKMICRO logo is added to thermal images in reports.....	17
2.9	Live anaysis: player frame rate auto control.....	17
2.10	Compatibility.....	17
2.10.1	New device function supported (by network connection)	17
2.10.2	Shield regions and sketch notes displayable in client	17
2.10.3	Connecting to devices that comply with EN 18031 supported	18
2.11	Client settings and maintenance.....	19
2.11.1	Client shortcut keys editable	19
2.11.2	Bright appearance theme available.....	20
2.11.3	Opening files with HIKMICRO Viewer.....	20
2.11.4	Saving dumping file for trouble shouting.....	20
2.12	User support	21
2.12.1	New feature introduction	21
2.12.2	Error codes and troubleshooting guide.....	21
3	Optimization and bug fixing.....	22

3.1	Optimization	22
3.2	Bug fixing	22

1 Introduction

The HIKMICRO Analyzer client is used to view the temperature information contained in thermal images and radiometric videos, and perform temperature measurement data analysis.

Thermal images taken by a thermal camera can be imported to the client for file management and analysis.

The client provides file management functions including file tagging, categorization, etc. In addition, file analysis can be performed, including image editing and temperature measurement data analysis. Multiple operations can be performed for the analysis, including configuring measurement tools, adjusting measurement parameters, switching image display mode, setting color alarms, etc. After the analysis, you can view the measurement results and charts, and save the images or export the report as required.

Radiometric videos recorded by a thermal camera can also be imported to the client for analysis. You can obtain the measurement results by configuring measurement tools, adjusting measurement parameters, etc. At the same time, the time-temperature curves and temperature distribution histograms will be displayed for you to check the temperature changes and distributions.

A thermal camera can be connected to the client for live view, and the real-time temperature measurement analysis can be performed for the live view image. You can obtain the measurement results by configuring measurement tools, adjusting measurement parameters, etc.

1.1 Version information

Version	Date
HIKMICRO Analyzer V2.0.1	2025-09

1.2 Multilanguage type

Type	Chinese, Czech, Danish, Dutch, English, Finnish, French, Germany, Hungarian, Italian, Japanese, Korean, Norwegian, Polish, Portuguese, Russian, Romanian,
------	---

	Slovak, Spanish, Swedish, Turkish, Traditional Chinese
--	--

1.3 Running environment

Operating System	Microsoft® Windows 7 (64-bit operating system) Microsoft® Windows 10 (64-bit operating system) Microsoft® Windows 11 (64-bit operating system)
CPU	i5-4590 or above
RAM	8G or above
Graphics Card	RADEON X700 series 256M or above

2 New features

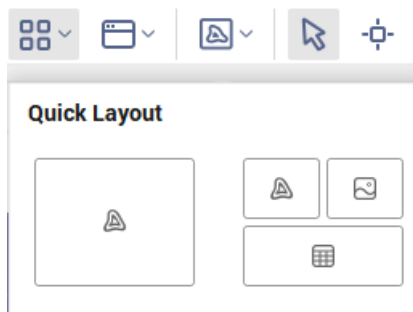
This chapter introduces the new features of HIKMICRO Analyzer Client V2.0.1

2.1 Window layout adjustment available

2.1.1 3 types of quick layout

Quick Layout refers to several commonly used window layouts built into the client software, which users can apply directly.

In the **Analysis** and **Live** tabs, click  in the toolbar to show the quick layout options. Click to select and apply.




The supported quick layout modes differ for image analysis, video analysis, and live analysis.

2.1.2 Arrange layout freely

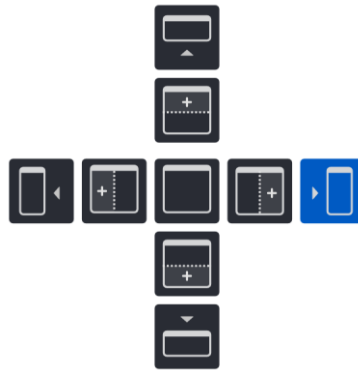
Users can freely add different types of information windows and adjust their positions and sizes.

Adding and Removing Windows

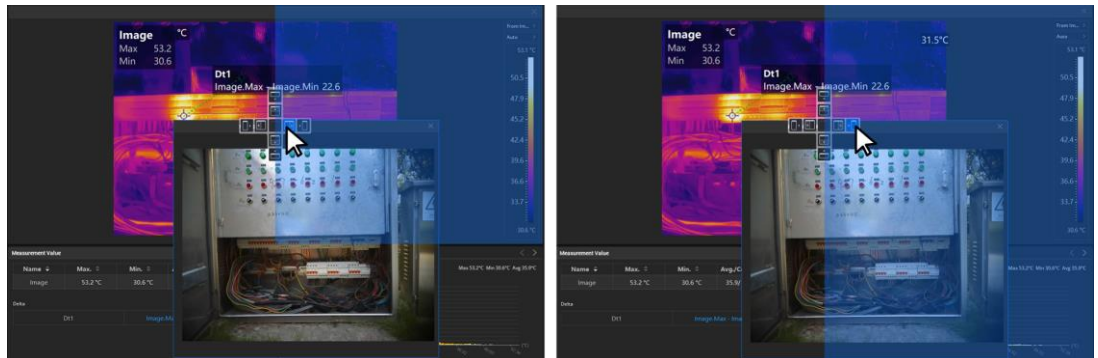
1. Click the toolbar icon  to open the list of supported windows for addition.
2. Click to select the required information window.
3. Newly image windows are added by default to the right side of the main window (the thermal image window); chart and table windows are added below the main window by default. Additional windows of the same type will be stacked as tabs.

Adjusting Window Position


Left-click on the window header you want to reposition and drag it to adjust its position. The layout indicator helps you locate where to place it.

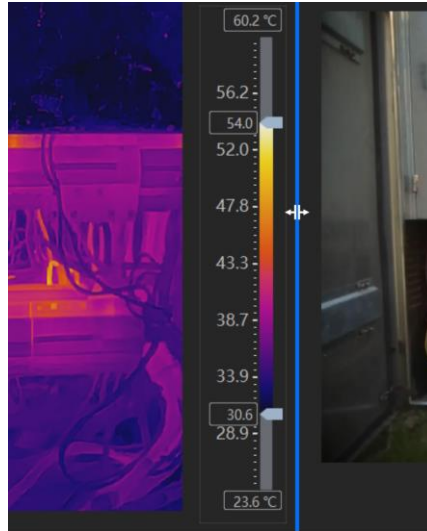


- To detach a window from the software interface: Drag the window header to any place where no layout indicator appears, then release the mouse.
- To adjust window position within the main software interface: Drag its header to the adjacent window of the target area until the layout indicator appears. Align your cursor with the indicator's position, then release to lock the window in the shaded preview zone.



Resizing windows

Move the cursor to the edge of the window. When the edge turns blue and the cursor changes to , drag to adjust that edge's position.

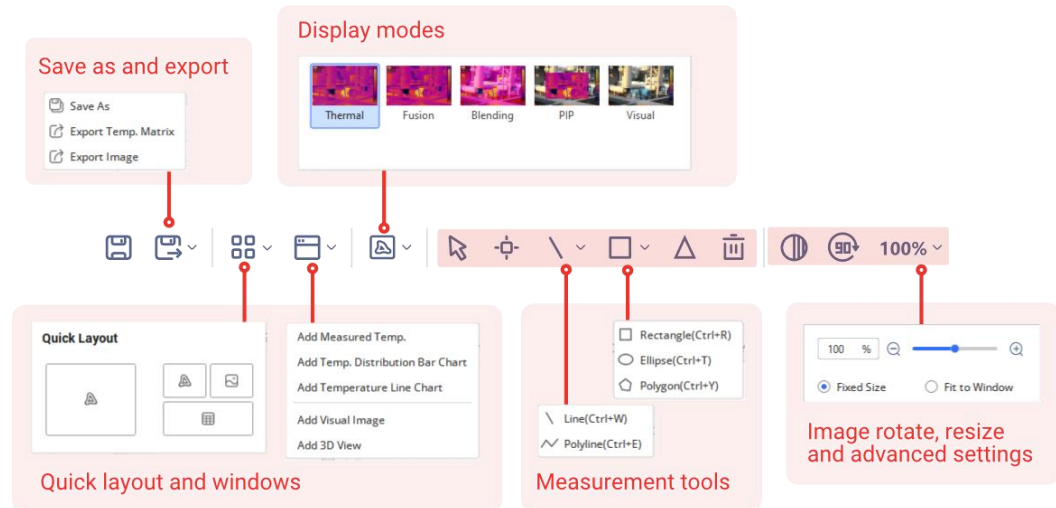


2.1.3 Window layouts are automatically saved

Window layouts for image, thermal video, and Live analysis are automatically saved per session and restored upon reopening.

2.2 Analysis toolbar and task list function rearranged

2.2.1 Top toolbar



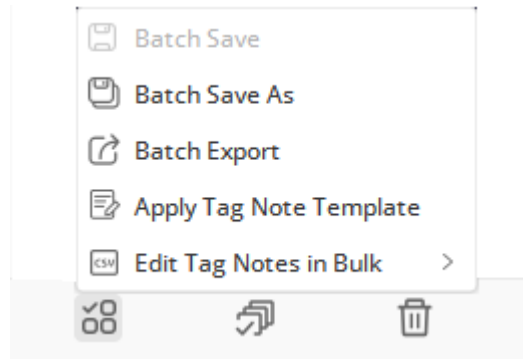
The top toolbar retains five function modules: window and layout adjustment, image mode switching, measurement tools adding and editing, image rotation, resizing and advanced settings, and file saving and exporting.




- The palette and level and span settings are adjusted to palette settings. See 2.3
- The access to overlay settings are moved to the right-click menu. See 2.4

2.2.2 Task list

Function buttons rearranged

Batch operation for image files in the task list are integrated into three action buttons located at the bottom.




-  auto grouping
-  batch operations
-  remove all files

Delta range is included during Apply Measurements to All

Delta range settings is also synchronized when **Applying Measurements to All** via the right-click menu in the task list.

2.2.3 Auto grouping all image files in task list

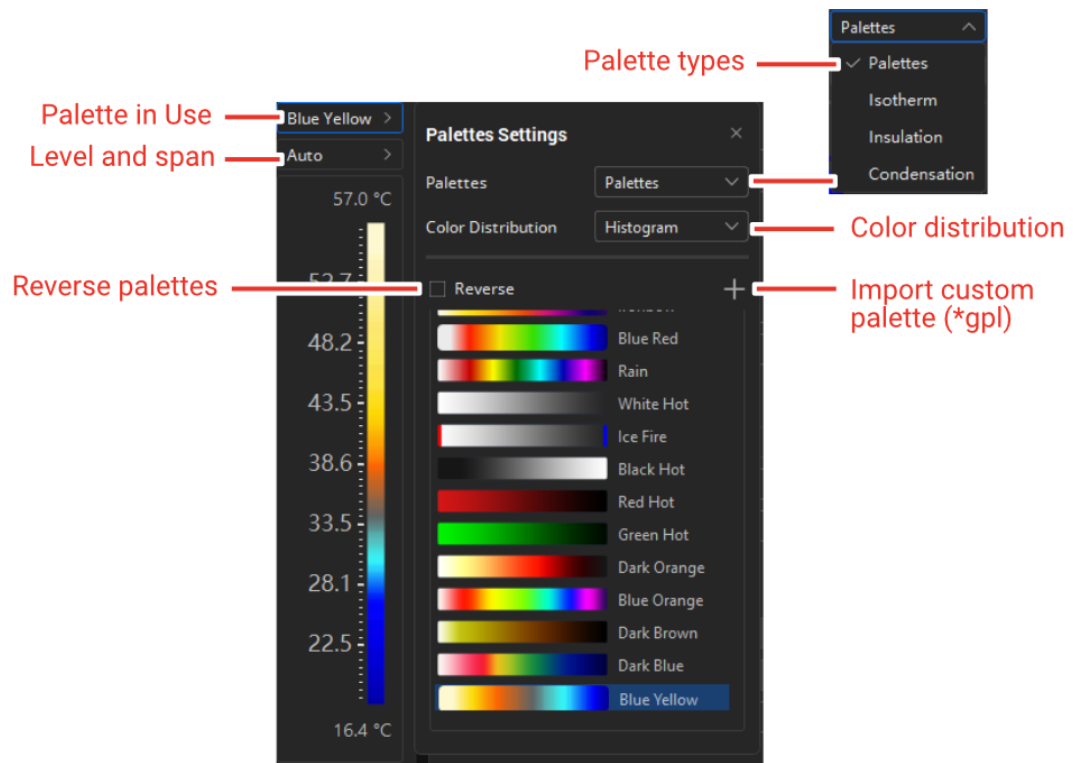
By setting a grouping rule, for example every two/three/four images a group, all thermal images in the task list are grouped automatically top down.

Click  to start auto grouping. Note that the image order should be arranged in advance as in-group order change is not allowed.

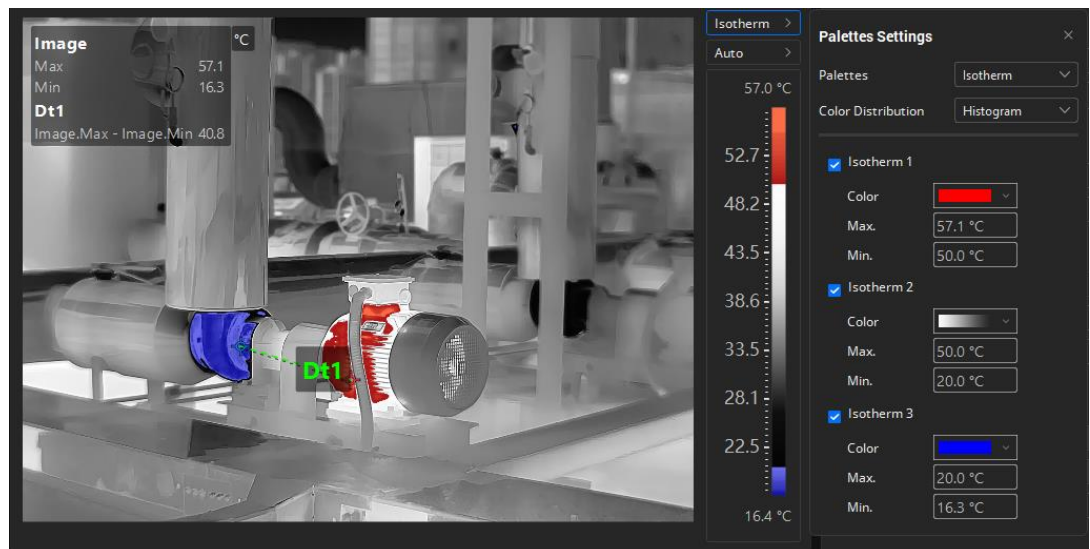
2.3 Palette settings reorganized

2.3.1 4 main palette types: palettes, isotherm, insulation and condensation

Access to all palette-related settings is consolidated within the palette bar area for easy use and navigation.



2.3.2 Isotherm provides 3 temperature ranges with distinguished color or palette filling



Isotherm is a palette mode which assigns differentiated colors to specific temperature ranges for quick identifying abnormal or special temperature areas in the image.

Up to three isotherm temperature segments can be set, each with either solid color or palette filling.

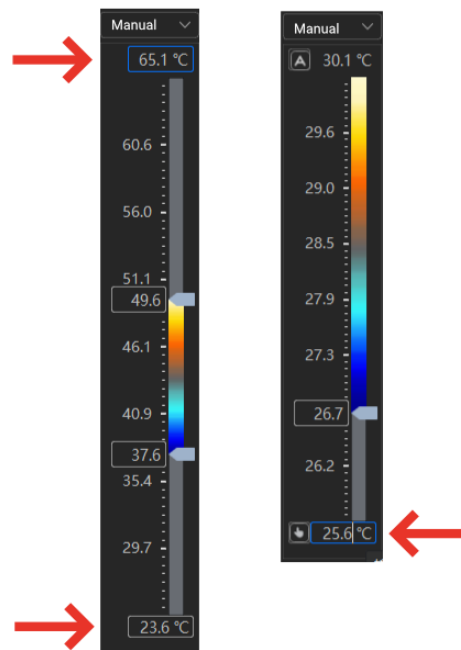
Check the required isotherms and set the temperature range and color or palette filling.



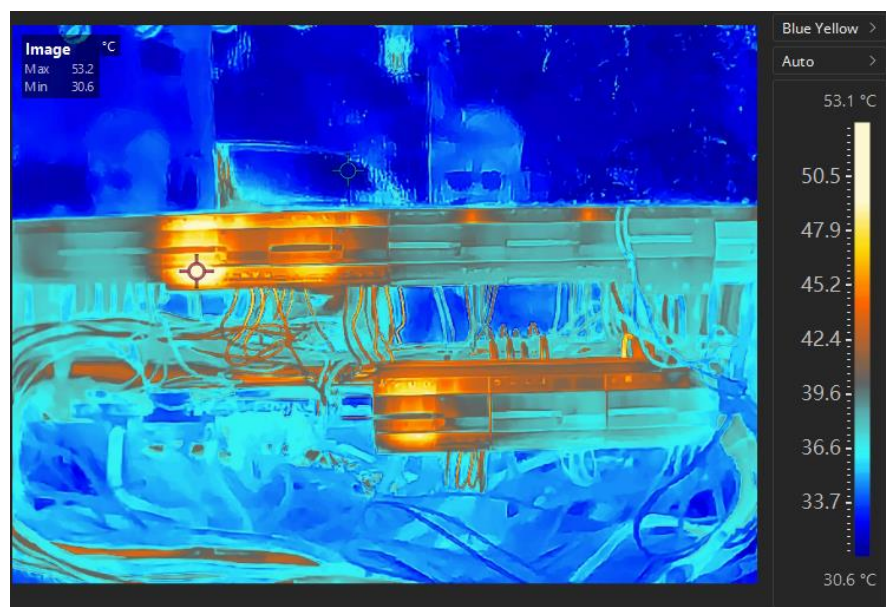
Temperature ranges of isotherms can overlap. When overlapping occurs, the priority order for effective isotherm segments is: Isotherm 3 > Isotherm 2 > Isotherm 1

2.3.3 Range of temperature scale is user adjustable

In manual level and span mode, the top and bottom of the temperature scale is adjustable.



2.3.4 New system palette: Blue Yellow



2.3.5 Supported palette file format is changed to *gpl

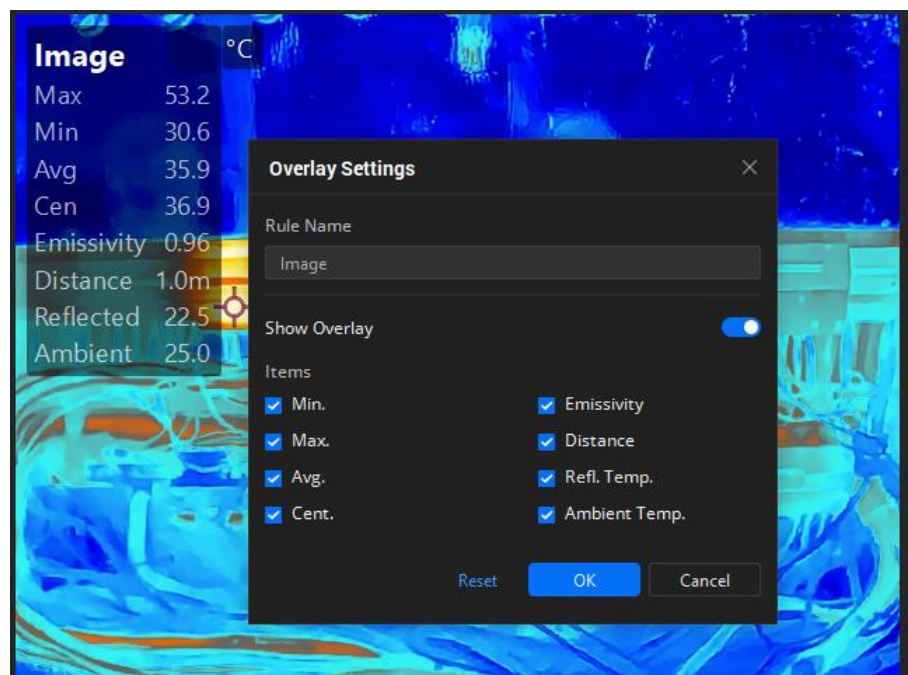
When importing a custom palette file into the client software, the file should be a *gpl instead of a *pal (*.pal is supported in earlier client versions).

2.4 New overlay options and styles

2.4.1 Emissivity, ambient temperature, distance and reflected temperature can be overlaid

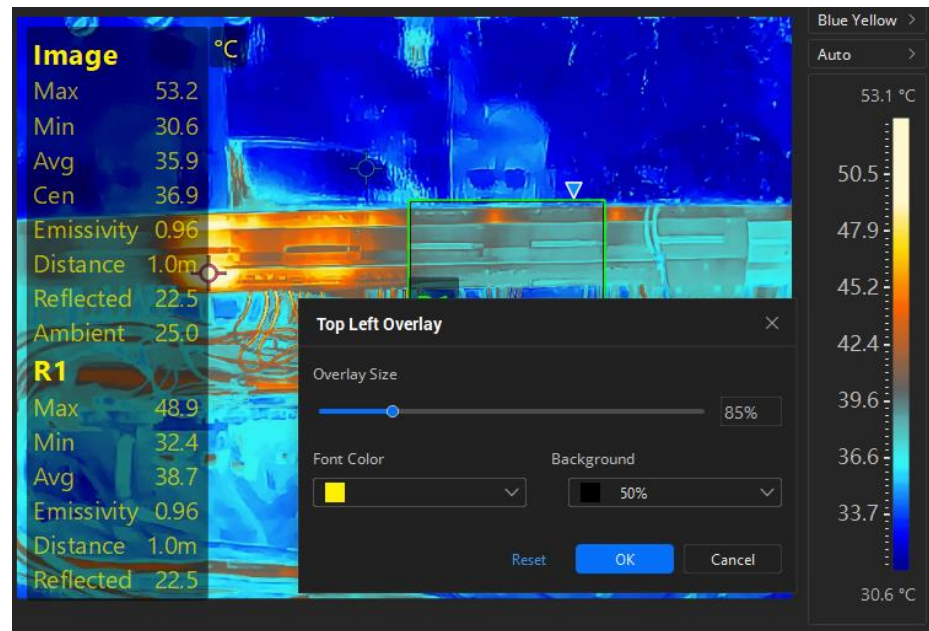
Right-click on the image and select **Overlay Settings/Tool Overlay** to view addible items.

Double click on the top-left info box can also open the overlay settings window.

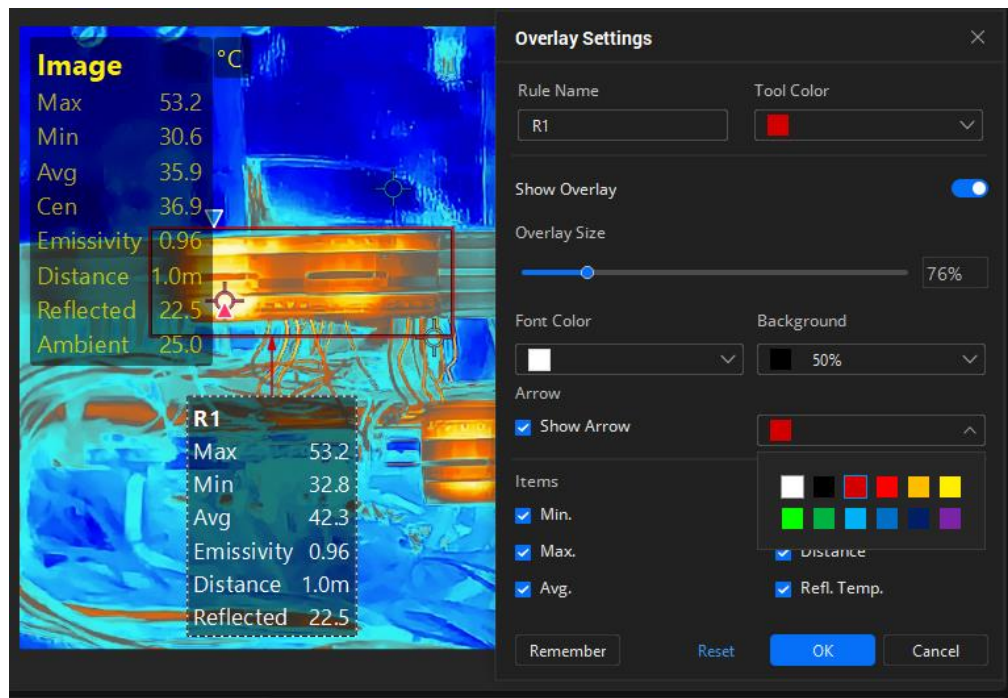


2.4.2 Top-left overlay style changeable

Right-click on the non-tool area of the image, and select Top-Left Overlay to change the font color, size, and the background.



2.4.3 Adjustable style of overlay displayed with measurement tools



Adjusting info box position

- Click and drag the info box to adjust its position. If **Show Arrow** is enabled, an indicator arrow is auto-generated when the info box is far from the tool.
- The client supports restoring overlays to default positions.

- In non-tool areas, use **Restore All to Default Overlay Position** in the right-click menu. For a specific tool, use **Restore to Default Overlay Position**.



- Overlay location settings apply to images (including live snapshots) and live stream analysis, but not to radiometric videos (including videos recorded during live stream analysis).
 - Arrows are not displayed when opening saved/exported images with standard photo viewers or video players. Arrows are only visible when opening radiometric images in this client.
-

Adjusting display items and color

- Double-click the overlay info box or select a tool area and use **Tool Overlay** in the right-click menu to open settings.
- In settings, configure tool name/color, overlay content items, size (scaling), text/background color, arrow visibility (auto-generated when a info box is far from the related tool), and arrow color.
- Click **Remember** to apply modified settings to future tools.
- Click **Reset** to restore to the default settings.

2.5 Settings path changed for overlay on exported images/videos

The new setting path is **Settings > Image Overlay > Overlay on Exported Images/Videos**.

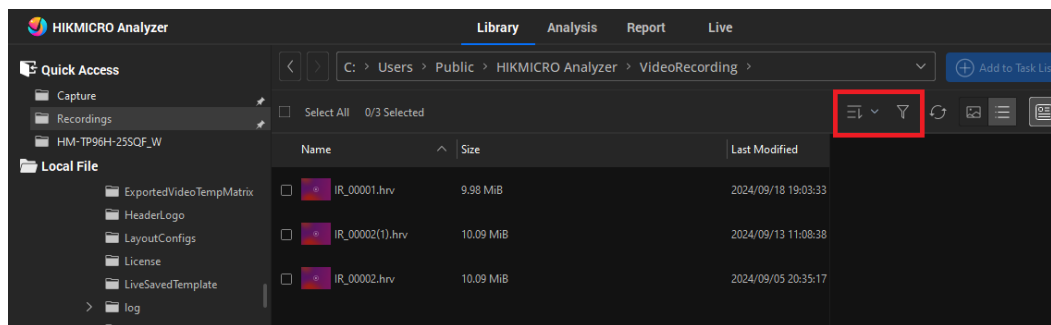
2.6 New features of exporting image temperature matrix

- The matrix of the ellipse, circle, and polygon measurement is supported for exporting.
- The pixel axes are added in the CSV file.

2.7 Library mangement

2.7.1 File sorting and filtering are supported in local file and

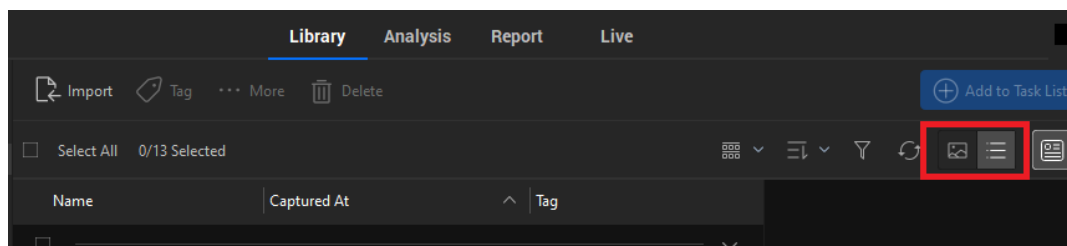
quick access folders



When filtering files in local and quick access folders, as long as the filtering conditions remain unchanged when switching between folders of the same type, and the filter is applied automatically upon folder change.

2.7.2 Files can be displayed in list in local and favorite folders

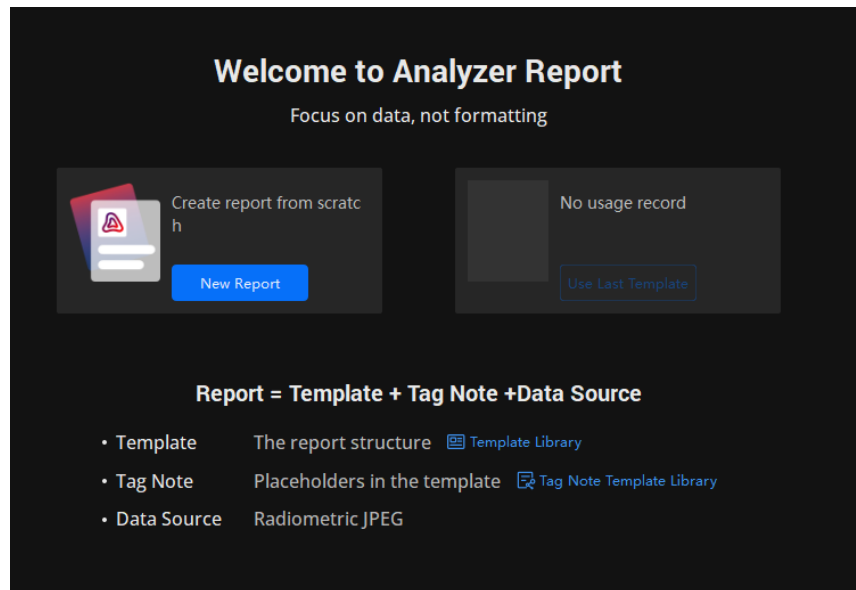
In favorite folders, display in list is also supported. The width of column is adjustable by dragging the header separator.



2.8 Report

2.8.1 New report home page offers creation guide

A report home page is added to offer creation guide and access to report template and tag note template libraries.

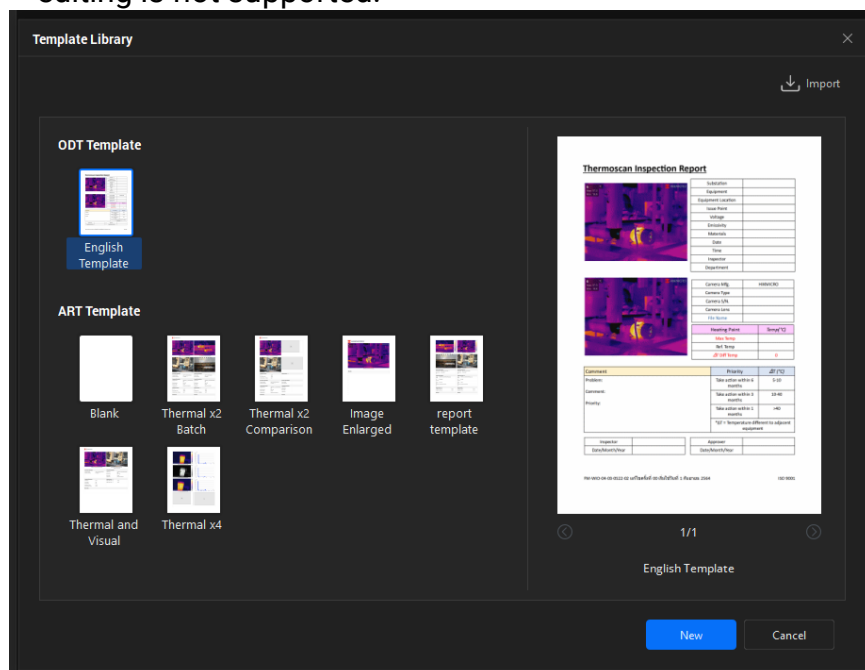


In report editing page, click  to enter the home page.

2.8.2 ODT format templates supported

This version supports generating reports based on imported *odt template.

- Import the *odt template from the template library from report home page.
- When generating reports with *odt templates, in-software report editing is not supported.



2.8.3 HIKMICRO logo is added to thermal images in reports

2.9 Live analysis: player frame rate auto control

When the live image experiences severe stuttering during live analysis, the client automatically adjusts the player frame rate to ensure a relatively smooth preview.



Frame drop may occur during the auto adjustment.

2.10 Compatibility

2.10.1 New device function supported (by network connection)

R&D box camera, HM-TD2C68E-25/Q, firmware V5.5.110 and newer versions: supports temperature measurement templates auto switch (reboot free) when switching between normal lens and macro lens.

2.10.2 Shield regions and sketch notes displayable in client

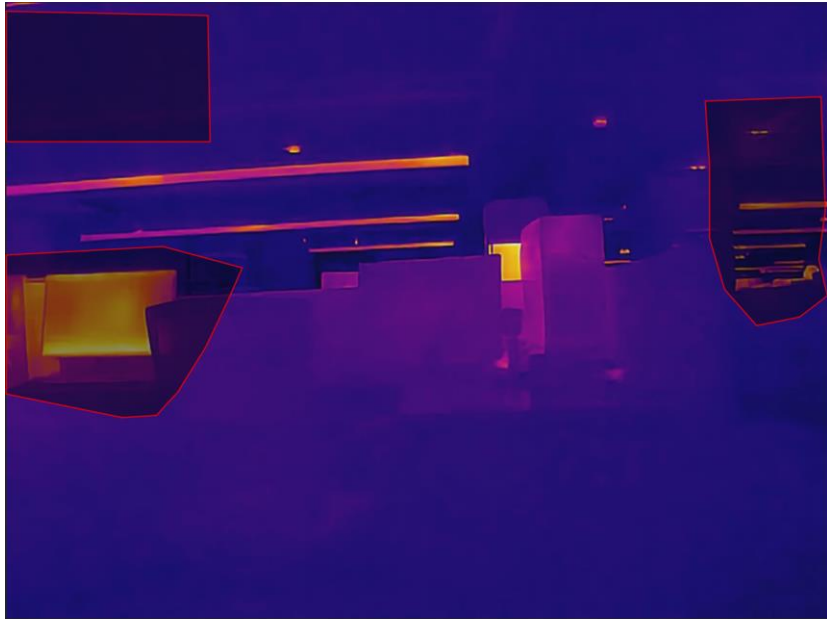
The shielded regions and attached sketch notes can be viewed in client analysis.

Shield region

In the client, shield regions are displayed as polygonal areas (with up to 10 sides) outlined in red and filled with gray transparent shading. Multiple shield regions may exist within a single frame.

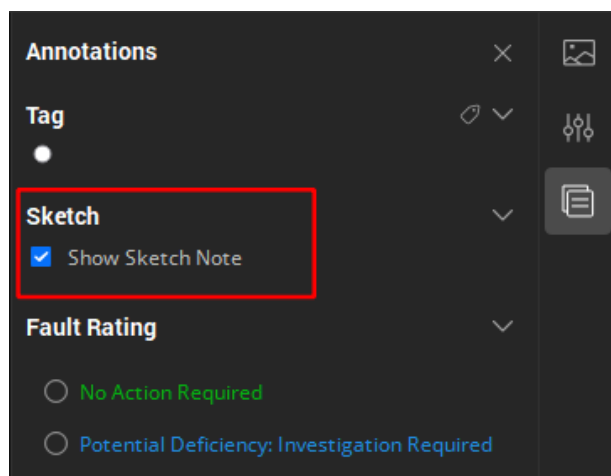
Temperature information within shield regions is excluded during analysis. Therefore, when adding measurement tools, ensure they do not overlap with shield regions.

Shield regions are view-only in the client and cannot be modified.



Sketch notes

During image capture, graphics annotated on the device via freehand sketching are termed Sketch Notes. Check the **Show Sketch Notes** in Annotation panel to display the sketch layer.



2.10.3 Connecting to devices that comply with EN 18031 supported

The version is compatible with new device firmware that complies with EN 18031.

When the client is connecting to a device by network, if the device's Network Access function is disabled, the client will prompt a window to

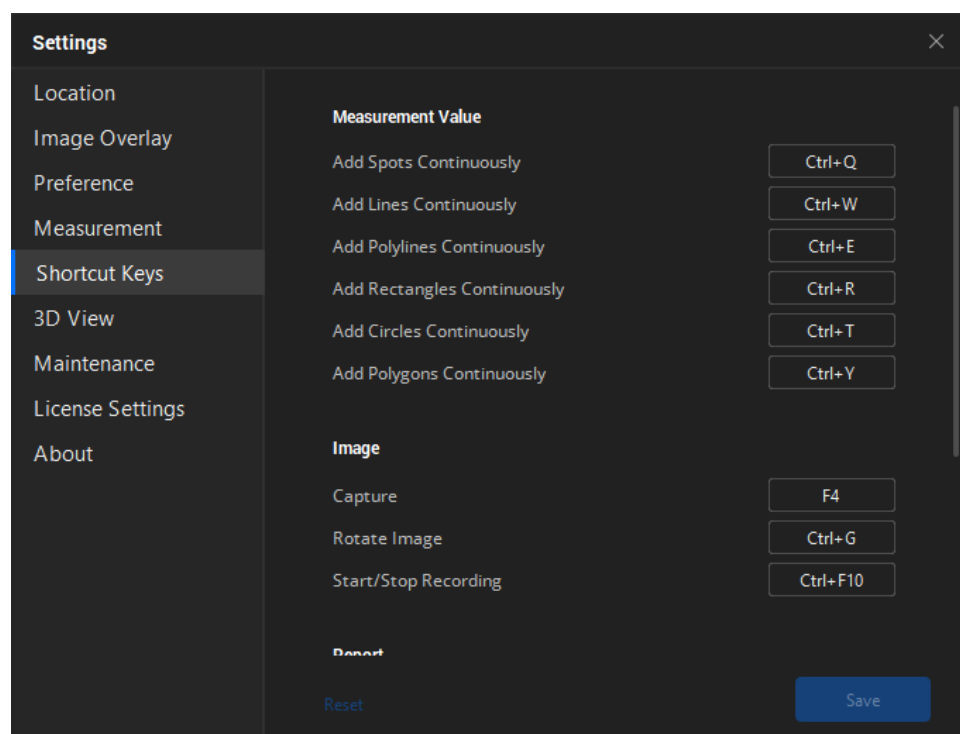
notify users and ask a permission to turn on the function on device and proceed the connection.

2.11 Client settings and maintenance

2.11.1 Client shortcut keys editable

In this version, the all editable shortcut keys can be viewed by **Settings > Shortcut Keys**

To change a function shortcut key, select one to be modified, and press the keys.



Rules of shortcut keys

Ctrl + Alt + Shift + X

- Modifier keys as **Ctrl**, **Alt**, and **Shift** are optional, while the X is compulsory.
- The X could be one key of the following types: alphabet keys, numeric keys, symbol keys such as !@#\$%^&*(), function keys from F1 to F12, and navigation keys as ↑↓←→.

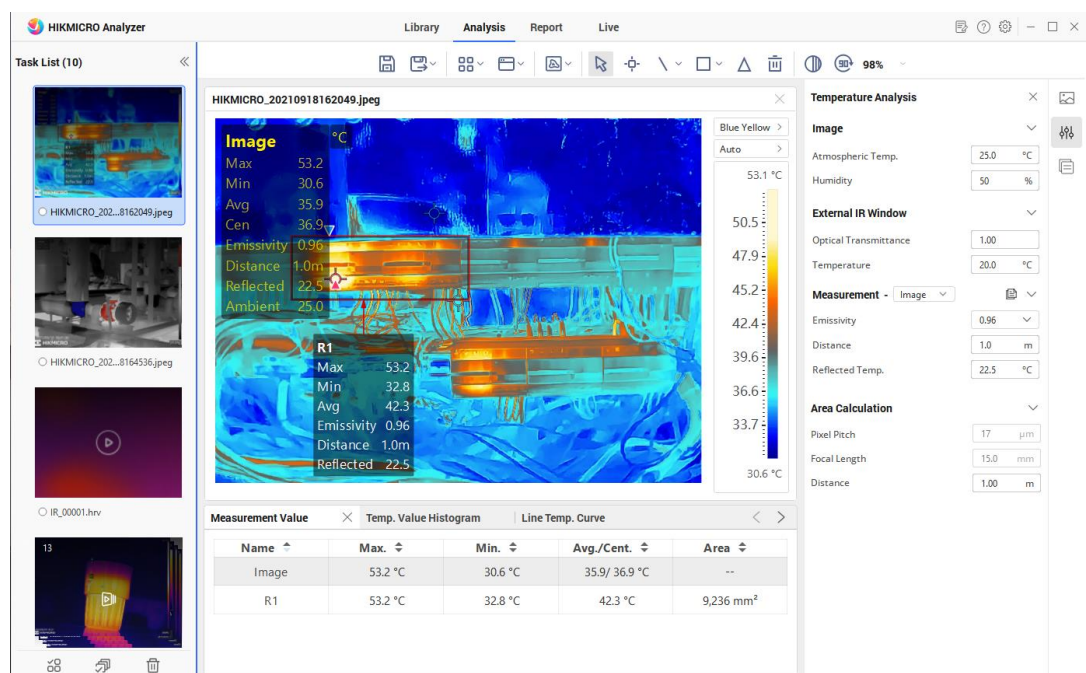


When a shortcut key conflict occurs, the client handles it according to the following two rules:

- **Scope of Effect.** The scope of a shortcut key refers to the functional module or window where it takes effect. If the scopes of the shortcut keys differ, the client responds to the shortcut key according to the current focus (active window). If the scopes are the same, the shortcut key priority rule is applied.
- **Priority.** A shortcut key set later in time has higher priority. If multiple shortcuts share the same scope, the client executes the one with the highest priority.

2.11.2 Bright appearance theme available

Go to **Settings > Preference > Appearance Theme** to change the theme between Dark and Bright.



2.11.3 Opening files with HIKMICRO Viewer

When installing or upgrading the client, check **Open RV and HRV Files with HIKMICRO Analyzer by Default, Open JPEG Files with HIKMICRO Analyzer by Default**.

2.11.4 Saving dumping file for trouble shouting

A dump file is a snapshot of a computer's memory at a specific moment—typically when a system, application, or process crashes or encounters a critical error. It captures the state of the operating system, running processes, loaded modules, and memory contents, providing crucial diagnostic data for troubleshooting.

After enabling **Save Dump File**, Windows creates a dump file for troubleshooting when the client crashes. Go to **Settings > Maintenance > Dump File Path** to get the dump file saving path. Download the file and send it to the technical support team for problem analysis.




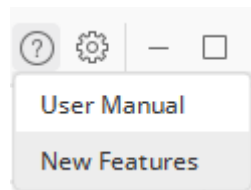
User Account Control confirmation is required to enable/disable the saving dump file function.

2.12 User support

2.12.1 New feature introduction

When you open this version for the first time, a new feature introduction page pops-up to give a quick idea about the main new features.

Click  in the upper right corner of the client and select New Features to read the page again.



2.12.2 Error codes and troubleshooting guide

For the frequently encountered error codes, this version provides an in-software error code and troubleshooting guide. Click on the hyperlink of the error code to view the troubleshooting advice of the error.

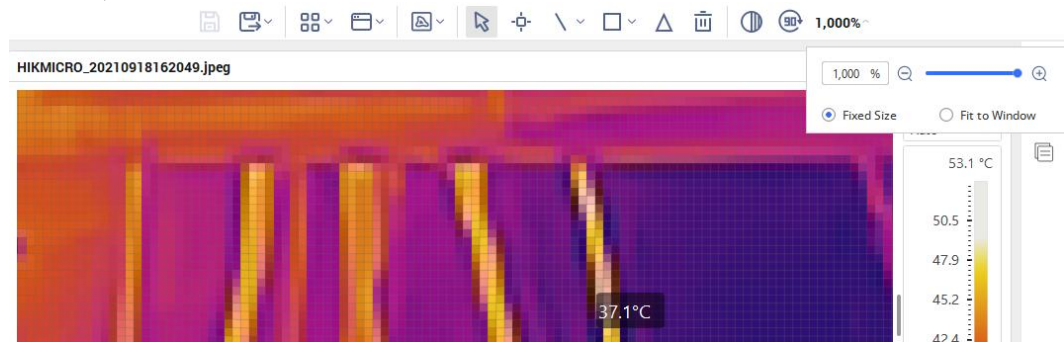


If the encountered error code is not included in the document, or if the issue remains unresolved after following the guide, please record the error code and contact our customer service or technical support for assistance.

3 Optimization and bug fixing

3.1 Optimization

- Optimized the overall visual experience of the client, unified the use of controls, and improved the visual consistency of pop-ups and controls
- Improved the overlay effects (line style and shadows) in analysis, exported image.
- Improved the visual consistency of overlays across different export types
- Improved image quality in exported PDF reports, screenshots and exported mp4 files.
- The maximum zooming of image during analysis (image, video and live) is adjusted to 1000%.



- When auto is selected in image Advanced Editing, detailed parameters are hidden.
- During video and live analysis, if too many chart windows are open, users are prompted to close some windows to improve client performance.
- Prompts and error codes display improved in Live analysis.
- Solved the difficulty of inputting palette bar temperatures during live analysis. Improve the slider operation smoothness.
- Enhanced the animations when switching between client main tabs.
- Optimized internal multi-process handling.

3.2 Bug fixing

- Fixed the issue of palette bar scale number shifting during temperature switching; removed the upper temperature limit for the palette bar, with the lower limit now configurable down to -273.15°C.
- Resolved the issue of file copy, cut, and paste failures in local folders.
- Fixed the problem that modified color tags of images during analysis were not synchronized to the library section.

Legal Information


© Hangzhou Microimage Software Co., Ltd. All rights reserved.

About this Manual

The Manual includes instructions for using and managing the Product. Pictures, charts, images and all other information hereinafter are for description and explanation only. The information contained in the Manual is subject to change, without notice, due to firmware updates or other reasons. Please find the latest version of this Manual at the HIKMICRO website (www.hikmicrotech.com/).

Please use this Manual with the guidance and assistance of professionals trained in supporting the Product.

Trademarks

 HIKMICRO and other HIKMICRO's trademarks and logos are the properties of HIKMICRO in various jurisdictions.

Other trademarks and logos mentioned are the properties of their respective owners.

LEGAL DISCLAIMER

TO THE MAXIMUM EXTENT PERMITTED BY APPLICABLE LAW, THIS MANUAL AND THE PRODUCT DESCRIBED, WITH ITS HARDWARE, SOFTWARE AND FIRMWARE, ARE PROVIDED "AS IS" AND "WITH ALL FAULTS AND ERRORS". HIKMICRO MAKES NO WARRANTIES, EXPRESS OR IMPLIED, INCLUDING WITHOUT LIMITATION, MERCHANTABILITY, SATISFACTORY QUALITY, OR FITNESS FOR A PARTICULAR PURPOSE. THE USE OF THE PRODUCT BY YOU IS AT YOUR OWN RISK. IN NO EVENT WILL HIKMICRO BE LIABLE TO YOU FOR ANY SPECIAL, CONSEQUENTIAL, INCIDENTAL, OR INDIRECT DAMAGES, INCLUDING, AMONG OTHERS, DAMAGES FOR LOSS OF BUSINESS PROFITS, BUSINESS INTERRUPTION, OR LOSS OF DATA, CORRUPTION OF SYSTEMS, OR LOSS OF DOCUMENTATION, WHETHER BASED ON BREACH OF CONTRACT, TORT (INCLUDING NEGLIGENCE), PRODUCT LIABILITY, OR OTHERWISE, IN CONNECTION WITH THE USE OF THE PRODUCT, EVEN IF HIKMICRO HAS BEEN ADVISED OF THE POSSIBILITY OF SUCH DAMAGES OR LOSS.

YOU ACKNOWLEDGE THAT THE NATURE OF THE INTERNET PROVIDES FOR INHERENT SECURITY RISKS, AND HIKMICRO SHALL NOT TAKE ANY RESPONSIBILITIES FOR ABNORMAL OPERATION, PRIVACY LEAKAGE OR OTHER DAMAGES RESULTING FROM CYBER-ATTACK, HACKER ATTACK,

VIRUS INFECTION, OR OTHER INTERNET SECURITY RISKS; HOWEVER, HIKMICRO WILL PROVIDE TIMELY TECHNICAL SUPPORT IF REQUIRED.

YOU AGREE TO USE THIS PRODUCT IN COMPLIANCE WITH ALL APPLICABLE LAWS, AND YOU ARE SOLELY RESPONSIBLE FOR ENSURING THAT YOUR USE CONFORMS TO THE APPLICABLE LAW. ESPECIALLY, YOU ARE RESPONSIBLE, FOR USING THIS PRODUCT IN A MANNER THAT DOES NOT INFRINGE ON THE RIGHTS OF THIRD PARTIES, INCLUDING WITHOUT LIMITATION, RIGHTS OF PUBLICITY, INTELLECTUAL PROPERTY RIGHTS, OR DATA PROTECTION AND OTHER PRIVACY RIGHTS. YOU SHALL NOT USE THIS PRODUCT FOR ANY PROHIBITED END-USES, INCLUDING THE DEVELOPMENT OR PRODUCTION OF WEAPONS OF MASS DESTRUCTION, THE DEVELOPMENT OR PRODUCTION OF CHEMICAL OR BIOLOGICAL WEAPONS, ANY ACTIVITIES IN THE CONTEXT RELATED TO ANY NUCLEAR EXPLOSIVE OR UNSAFE NUCLEAR FUEL-CYCLE, OR IN SUPPORT OF HUMAN RIGHTS ABUSES.

IN THE EVENT OF ANY CONFLICTS BETWEEN THIS MANUAL AND THE APPLICABLE LAW, THE LATTER PREVAILS.



HIKMICRO

See the World in a New Way